



SHARP

Sustainable Hydro Assessment &
Groundwater Recharge Projects



NEWSLETTER

Issue 3 / June 2011

SHARP
OVERVIEW & ACHIEVEMENTS

MEETING IN UDINE / IT

SHARP NETWORK

GOOD PRACTICES - IDENTIFIED

SHARP — saving and protecting water resources for future generations!

The main activities of SHARP so far consisted of the Kick-Off-Meeting in Graz, the 1st Project Seminar in Edinburgh and the 2nd in Udine. The meeting in Graz was completed by a visit of the two artificial groundwater recharge sites in Andritz and Friesach that are being operated by the Holding Graz Services GmbH.

Thus, one of the SHARP key contents was already covered by a firsthand experience. Gained know-how by continuously applying the selected implementation over almost the last thirty years could be transferred to less experienced project partners whose climatical, geological and environmental conditions would favour such a solution. All three meetings included press releases and press conferences with local media, disseminating the activities to a broader audience.

Current results achieved within SHARP comprise know-how transfer by presentation of existing know-how and experiences in SHARP key contents, definition of specific demands by partners and the following discussion within the complete project partner group. Hence, the capacities of the participating staff have been increased.

Moreover, the SHARP Virtual Information Center including a knowledge management system and also the project website, newsletter and logo have been set up.

SHARP VIC is serving as an exchange platform between interested stakeholders and project partners.

Until now SHARP has produced two major outputs. The first one is a table of 15 already existing know-how

and experience of good groundwater management practice. Project partners are working on corresponding reports that include a concise description of the essential characteristics of the methodology or implementation and its intrinsic goals combined with arguments in which way the selected methodology or implementation is superior compared to other procedures.

Furthermore, benefits obtained through the project partners by application of the good practices will be discussed. The second output consists again of a table containing 15 topics where existing know how and experiences of partners will be adapted for application in different regions. For each topic a responsible partner has been assigned who coordinates the activities among the other participating partners. This process will result in a joint development of innovative methods and techniques based on specific demands of involved project partners.

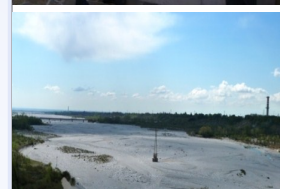


Successful interregional cooperation!

2nd SHARP Partners Meeting and Seminar including the 3rd Steering Group Meeting took place with 29 participants in April 2011 in Udine, Italy. The Meeting was organized by PP4 ERSA in cooperation with the Lead Partner.

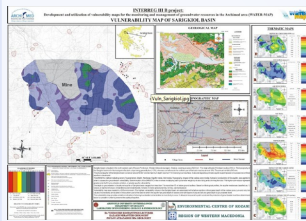
The meeting addressed administrative as well as technical issues with a special reference to experiences & results regarding the 2nd reporting period. The meeting included a thematic seminar on "Water management in agriculture" with detailed presentations on "Water resources for agriculture: facts, needs and perspectives in the Friuli Venezia Giulia region" and "DSS and "what if simulation" as tools for best practises dissemination in agriculture".

Individual partner presentations have been held and expert discussions took place. Mr. Stevanovic from the Faculty of Mining & Geology, University of Belgrade informed the partners about "Case studies of aquifer regulation and artificial recharge in Serbia". On the 2nd day a technical visit was organized by PP4. Visit of the hydro-electrical energy plant of Pantianicco which supplies water for the farms of the surrounding area and visit to the site of the dam of "Ravedis" which supplies water for drinking and irrigation purposes in the western plain and visit to the water facilities of the Water Management Consortium Meduna Cellina.



SHARP - excerpt „good practices“

PP2: RWM - Region of Western Macedonia (EL)



GIS Vulnerability Maps

Vulnerability maps inform about the need of groundwater protection and pollution prevention. The maps help to determine which areas may have groundwater vulnerability problems and what types of site-specific data or studies may be needed. GIS-based vulnerability maps support the spatial development planning process. The spatial integration of the vulnerability maps in the decision support system enables the regional authorities to design optimal spatial development policies.

PP4: ERSA - Regional Agency for Rural Development of Friuli Venezia Giulia (IT)



Water Framework Directive Guidelines

This practice is meant to take into consideration the indications provided by the EU Directive no. 2000/60/EC (Water Framework Directive, WFD) in order to assess the economic value of the water distributed. For the implementation of the economic elements the analysis will follow the proposal of the WATECO (WATER Framework Directive & ECONomics). Consistently with the Water Framework Directive rationale, this approach will contribute to the information of the public and of the interested parties. The different elements of the economic analysis could represent further guidelines to be integrated in the local policy decision.

PP5: LCA - Local Councils' Association (MT)



Aquifer Recharge Project

Currently, a pilot project for the Artificial Recharge of the Mean Sea Level Aquifer with polished TSE is underway in Malta. This pilot project will test the qualitative and quantitative impacts of a direct artificial recharge to the Mean Sea Level system. The TSE polishing includes further purification by ultra-filtration and reverse osmosis.

This project involves the following objectives and practices: setting up of a polishing plant for the further treatment of sewage effluent from a nearby Wastewater Treatment Plant; Detailed analytical testing of the polished effluent for indicators of emerging pollutants; Continuous monitoring in the immediate area of the recharge well for groundwater level and conductivity.

PP6: IMGW- Institute of Meteorology and Water Management National Research Institute (PL)



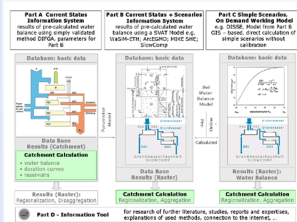
Systematic monitoring of groundwater and surface water (mining closure)

The presented best practice is an example of a comprehensive monitoring of water resources, and other elements of environment associated with water management within the strongly anthropogenically transformed Lusatian Neisse basin. The monitoring is performed in order to demonstrate the environmental friendly approaches of two investments

- 1) flooding the post-mining pit Berzdorf with water from the Neisse river (DE, PL) and its left tributary the Pliessnitz (DE),
- 2) water transfer from the Lusatian Neisse river to Spree basin. The basis for the

monitoring is a common Polish-German concept. Every year, each side prepares a monitoring report which covers data from its territory from the previous calendar year.

PP8: LfULG - Saxon State Office for Environment, Agriculture and Geology (DE)



KIIWES

Assessment of the impact of the climate changes predicted for Saxony on the water and material balances in the catchment areas of Saxon water bodies – Water Balance Section. The KIIWES project is a good practice introduced by the Saxon State Office for Environment, Agriculture and Geology (LfULG). It covers the assessment of the impact of the climate changes predicted for Saxony on the water and material balances in the catchment areas of Saxon water bodies. KIIWES stands for "Abschätzung der für Sachsen prognostizierten Klimaveränderungen auf den Wasser- und Stoffhaushalt in den Einzugsgebieten der sächsischen Gewässer". Especially today where the predicted climate change calls for urgent adjustments to its impacts on a worldwide scale and poses new challenges on the management and prognostics of water resources, KIIWES is a good example for how to tackle this issue.

SHARP - Further project information

SHARP project website is online and available under www.sharp-water.eu!
 SHARP KMS (knowledge-management-system) is established.

NEXT Meeting:

4th Partner Meeting in Wroclaw (PL) and Dresden (DE) organized by PP6 and PP8 in cooperation with the Lead Partner will take place from October 18th until 20th 2011.

SHARP — project details

SHARP is implemented by:

- WATERPOOL Competence Network GmbH (AT), Lead Partner
- Region of Western Macedonia (EL)
- Region of North Aegean (EL)
- Regional Agency for Rural Development of Friuli-Venezia Giulia (IT)
- Local Councils' Association (MT)
- Institute of Meteorology and Water Management - Wroclaw Branch (PL)
- International Resources & Recycling Institute (UK)
- Saxon State Office for the Environment, Agriculture and Geology (DE)
- Holding Graz Services GmbH (AT)



© INTERREG IVC Information Point East

SHARP project duration:	January 2010 — December 2012
Total SHARP budget:	EUR 1,871,978.50
ERDF contribution:	EUR 1,466,579.97
SHARP is implemented through the INTERREG IVC Programme, co-financed by the ERDF	

For further information please contact:
 WATERPOOL Competence Network GmbH
 Mr. Gerhard PROBST (Project Manager)
 E-Mail: gerhard.probst@waterpool.org
 Telephone: +43 / 316 / 33 99 90 / 13
www.waterpool.org and www.sharp-project.eu